



# KAYA

METAL PLASTİK

**KAYA METAL & PLASTIC COMPANY**

Adress: Teksan Industrial Zone G1 BlockNo:10 ESKISEHIR / TURKEY

Tel: +90 222 228 14 16 / 17 - Fax: 0 222 228 14 18

Mobile: 0 533 682 00 26

E-mail: [info@kayametalplastik.com](mailto:info@kayametalplastik.com)

Web: [www.kayametalplastik.com](http://www.kayametalplastik.com)



**As “KAYA METAL & PLASTIC COMPANY” we offer all product needs of Turkish and International Metal and Plastics Industry within the framework of the International Standards and Quality Management at the highest level to our valued customers, since 2016...**

## **About Us;**

Our company "KAYA METAL & PLASTIC", which was established in Eskişehir in 2016, sells wholesale forms of non-ferrous metals, especially aluminum, galvanized, lead, copper, zinc, stainless steel, brass, tin and plastic products such as polyethylene, polyamide, fiber, teflon, PVC, polypropylene in sheet, pipe and bar shapes to the domestic and international markets. Besides that our company can sell and ship desired types and sizes of metal and plastic products in line with customers' demands

"KAYA METAL & PLASTIC" which adds working discipline to its experience in the sector continues its activities without compromising work ethic and with the determination and understanding to do better every day. The rapid growth and recognition of our company in the metal & plastic industry in a short time is not leaving the principle of honesty in our work and balancing the price-quality performance of requests from our customers and ensuring the shipment as soon as possible. In line with our customer-oriented service approach, the products, service and after sales support that our customers need, we offer social and environmental responsibility.

As "KAYA METAL & PLASTIC Company" We offer you a wide product range of our solution partners who have proven their place and quality in the sector and standardized their products with global certificates.



## **Our Mission;**

To supply the needed products to our business partners who located in every point of the world and Turkey, and delivers the products without any problems ensuring the price-quality balance as soon as possible; and to be a respected company that provides the highest level of service to the Turkish Industry, with our innovative, experienced and expert staff who always aim to develop and to ensure that the understanding of trust, quality and service is fully included in all our activities.

## **Our Vision;**

To be a leading company in the Metal and Plastic industry. To adopt the quality as a way of life and make the KAYA METAL & PLASTIC Company" brand a permanent reliable brand in our environment and our region.

To produce quick responses to the needs in the markets abroad, to be a leading corporate structure.

To provide and to ensure the product needs of International Metal and plastics industry in Turkey at the highest level within the framework of quality management and the international standards.



## METAL PRODUCTS



### ALUMINUM

Aluminum is one of the most abundant metals in nature. It is durable to air and water effects. It is easily formed due to its softness. Aluminum products is used in machinery and automotive industry, aircraft industry, warehouse tanks, construction, exterior, roof and insulation works, etc.

Our Types :

- \* 7075, 6082, 6013, 6063, 5754, 5083, series Lama - Sheet - Bar Aluminum
- \* Profiles in Standard and Special Sizes and Figures
- \* 1050 Aluminum Sheet
- \* Embossed and Cheetahs (Baklava and Tear Pattern)
- \* Sigma profile
- \* Aluminium foil

Properties:

- It has 4 times more thermal conductivity than steel.
- It is 1/3 lighter than steel.
- Easy to move, fast sawdust removed.
- These features make it more economical.



### COPPER

Copper products are rarely found in nature freely. They usually consist of sprouts. It is available on the market as electrolytic and refined. Its heat and electrical conductivity is very high. Apart from these, optionally, special production is made in zirconium, beryllium, chrome-nickel alloy and various alloys. Electrolytic copper materials are always used as an electrode in erosion machines and as a busbar in high-current electrical panels, transformers and work machines.

Our Types :

- \* Electrolytic coppers, Tailstock coppers, Zirconium copper, Beryllium copper, Grounding rods, Straight and coil pipes, Copper fittings, Copper wires, Non-standard copper dimensions are obtained by forging.



### BRONZE

It gives the best result in bedding. It extends the life of the machine and the part it works. It is used as bushing, as a gear and nut. Minimizes repair maintenance.

Our Types :

- \* Solid and Perforated Rods.
- \* SnBz - 5, SnBz - 7, SnBz - 12, bronze filled, perforated rods and blades.
- \* Aluminum bronze filled, perforated, sticks and blades.
- \* Phosphor bronze rods, sheets and rolls.
- \* Graphite bronze.

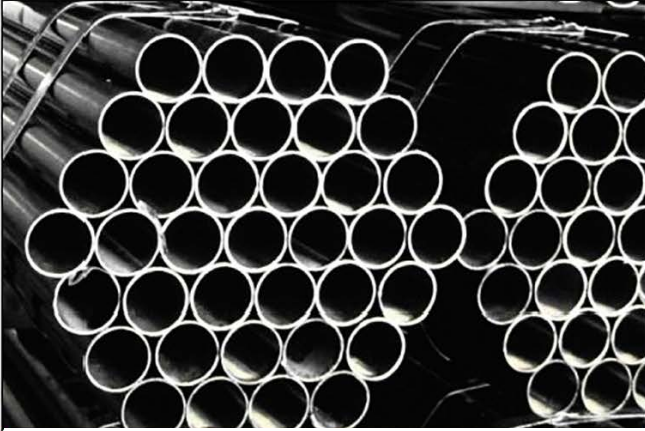


### BRASS

Brass is copper and zinc alloy. It is generally in the form of 40% zinc and 60% copper. If the brass is desired to be hard, the zinc content in it is increased. If soft brass is desired, the zinc content in it is reduced and the copper ratio is increased. Soft brass is also used as forged brass. For easy processing of the brass in the machine, 1-3% lead is added to it.

Our Types:

- \* Ms 58 - Ms 63 - Ms 70
- \* Welding wires, Hexagonal, lama and bars, Sheet and strip rolls
- \* Fine wires, Erosion wires ,Pipes and profiles
- \* Caliber and press types are available.



## STEEL DRAWING PIPE

Seamless line pipes are generally preferred in working conditions with high pressure and high temperature, or when high carbon or alloy steels are required. These pipes need to be produced seamlessly, especially since the production of thick-walled, high-carbon and some alloy-containing pipes is limited by technology.

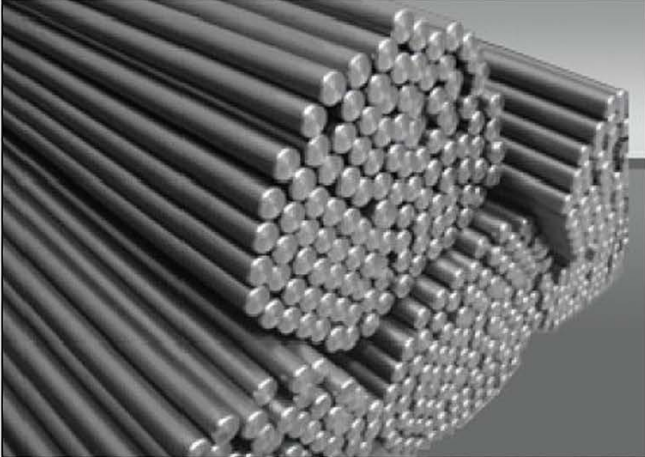
### Our Types :

Pipes for automotive and agriculture sector, Pipes for mechanical purposes, Boiler and Heat Exchanger pipes, Hydraulic pipes, Precision caliber pipes  
In addition, we produce solutions in accordance with the demands of our customers by making sensitive operations in measurement, tolerance, surface roughness values in line with the special requests of our customers.

It is completely European norm in seamless pipes; It is supplied in DIN 2391 (EN 10305-1 / EN 10305-4) standards.

### Usage areas

Towel Industry, In Heat Radiators, Qualified in other sectors for decorative purposes

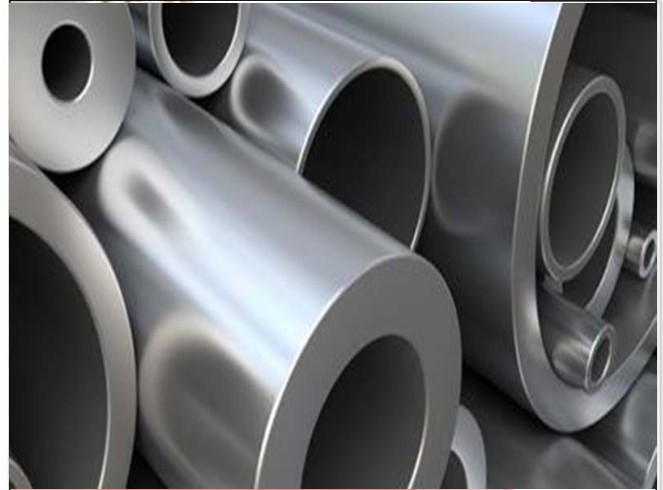


## MERCURY STEEL

Despite it is named as "mercury steel" in our country, it is chrome and vanadium alloy, easy to work and heat treated, it is resistant to abrasion, and it is resistant to abrasion and cold work tool steel according to DIN 670 h8 standard.

### Usage areas:

Mercury steels are a tool steel that is hardened with water suitable for the construction of spiral and tooth drills, taps, reamers, countersinks, tailstock drills, rasps, hole punches, metal saws, pull punches and all kinds of staples, nails and such tools.



## STAINLESS

Stainless are chromium and nickel added steels that durable to chemical effects and high temperatures.

### Our Types :

\*AISI, 310, 304, 316, 430 quality stainless sheets

\*AISI 303, 304,310, 316, 420 quality stainless bars

\*AISI 304, 316, quality stainless pipes.

\*STAINLESS (CHROME) SPECIES: Stick sheet, sheet, hexagon, square, pipe, profile, angle iron, screen wires, fittings and fittings.



## LEAD SHEET

The fact that it has a soft structure brings the lead sheet to the first place in coating dome-style structures. Lead is the metal that is least affected by climatic heat changes due to its softness. Aluminum is light as zinc, but when harder metals are exposed to expansion during heat changes, they cause problems such as rupture, throwing, cracking in their joints. On the other hand, lead sheet has the feature of absorbing expansion within its structure thanks to its soft structure.

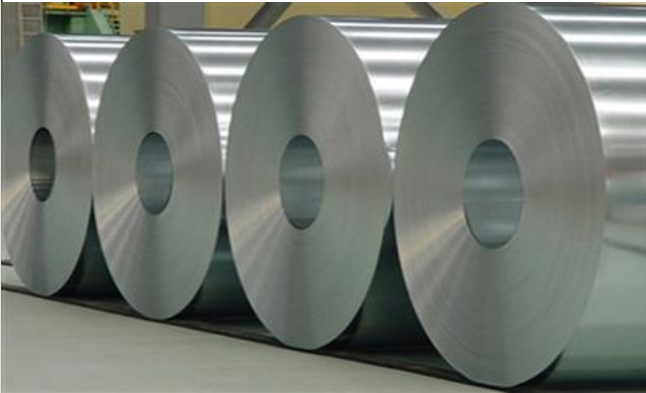
### Usage areas:

\* As a precaution against radiation in laboratories, hospitals, dental and veterinary clinics,

\* Roof coverings of flat and sloping places to be used in construction works, Roof coverings of mosques, Wall skirts, Ditches, Guardrails,

\* Acid tanks, acid discharges and all detailed lead works to protect against corrosion

## METAL PRODUCTS



### GALVANIZED SHEET

Galvanized used in prefabricated building manufacturing, roof and facade coatings, barrack construction, silo and warehouse constructions and decoration pieces as wall and ceiling coating.

It is long lasting. Zinc coating does not spill when folded, it is suitable for deep drawing and plastering. It holds solder easily, It can be painted easily, It is durable to fire. It is economical, practical and resistant to all kinds of external factors. It is used in the production of solar collectors.



### CHROME PLATED SHAFT

In hard chrome plating, induction hardening is applied on the column shafts to increase the durability of the chrome.

Hard chrome plated shafts are produced to be used as rod shaft in hydraulic and pneumatic cylinders and as column shafts in bearings. Hard chrome plated shafts are standard sizes between 8 and 200 mm in diameter and 6 mt in length.

The hard chrome layer provides an excellent corrosion resistance to the material according to various environmental conditions. It also provides excellent abrasion resistance against abrasion and heating on surfaces in contact with each other.

Steel grade CK45 is covered with polyethylene.

For the orders of shaft under 6 meters, the shafts can be cut and sold to the desired size.

## PLASTIC PRODUCTS



### PE/ POLYETHYLENE

It is a material with high chemical resistance. It has low density. It is a slippery material with low friction coefficient. Water or moisture absorption is close to zero. Can be used especially in industrial kitchens and as a butcher cutting log. This material also has the ability to be welded. It is a softer and less rigid material than polyporylene and PVC. The element that characterizes polyethylene is molecular weight. It can be grouped into three groups as low molecular weight, high molecular weight and ultra high molecular weight. (PE 300, PE 500, PE 1000). Especially PE 1000 has very high abrasion resistance. It provides excellent strength when working with metals.

Usage areas;

Star gears / gears, Truck and Silo Coating Conveyor, Chain slides Bottling applications, Meat cutting benches (PE 500), Paper industry, Automotive industry, Fender, Textile industry, Machine parts, Food industry



### PA / POLYAMIDE

Its mechanical strength is very good, but its chemical resistance is not very strong

Operating temperature is between + 85 ° C and - 40 ° C

Usage areas;

Simple threads and bolts  
Flanges and belt pulleys  
Cutting plate, filter plates  
Workbench and all kinds of parts manufacturing  
Machine manufacturing  
Industrial wheels  
Reels  
Bearing bushes



### CAST PA/ KESTAMIT

It is a material from the polyamide group. It is used for making gear wheels because of its high abrasion resistance. It is used for all kinds of gears due to its impact resistance, silent operation and non-lubrication, in the rotating and sliding moving machine parts, in the heavy industry gear and bearing area, in the over-tonnage load rollers, in the aquaplanning and spare parts of the construction machines, in mechanical motion communication. It is easily processed on machine tools. It is not affected by the environment, it is resistant to corrosion. It ensures the machine to operate without impact.

Packaging, textile, metal processing, leather, chemistry, construction, etc. It is successfully used instead of metal material in all machines. It is used safely in railways and trains all over the world with its light weight, corrosion resistance, impact resistance and superior mechanical properties. It is used in bearings, gears, rollers and roll structure. It is used in excessive tonnage load machines, aquaplanning and spare parts of construction machines.

Operating Temperatures are between + 90 ° C and -30 ° C.



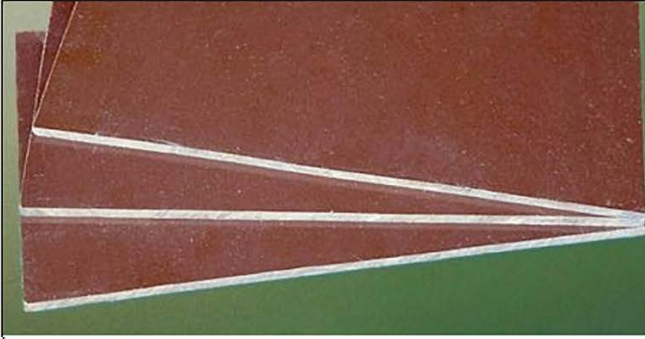
### POM/ DELRIN

A thermoplastic commonly used in technical applications. They are hard, durable and elastic from metals, and they retain their properties in a humid environment and a wide temperature range. it is resistant to fatigue and variable temperature.

Bearings, Bushings, Cylinders, Machine gears, cylinders and all kinds of parts manufacturing in heavy industry, bearings exposed to overload, conveyor systems, pin, worm screw, piston, shaft, washer, etc. used in areas. Suitable for Food Industry.

Operating Temperatures are between + 100 ° C and -50 ° C.

# PLASTIC PRODUCTS



## FIBER

Phenolic Ketone Based Fiber (Fibre Braided) sheets and bars have been used in engineering designs for a long time.

Today, with the technological development of plastics, it has lost many of its usage areas. The highly textured phenol structure material with high abrasion, temperature and load resistance has very good electrical properties.

Usage areas:

- All kinds of machine parts, gear groups, bearings, pads...
- Fiberboard dimensions: 1000 \* 2000mm
- Fiber rod dimensions: 1 mt



## PTFE/ TEFLON

It is a soft material. Impact resistance and mechanical strength values are low. Breaking elongation is high. The friction coefficient is very low. These properties give the material slipperiness and flexibility. Electrical properties are also very good.

Usage areas

Coating materials such as metal, plastic, wood, ceramics, Pumps, valves, Conveyor belts, Food industry, Medical materials, Petrochemical plants, Various moving insulating parts for electric vehicles, Bushing, bearing, segments. PTFE Alloys are used.



## ACRYLIC / PLEXIGLASS

Acrylic sheet is a polymethyl methacrylate based thermoplastic material. It has high heat permeability. It is 6 times more resistant to impacts than normal glass. Its broken parts are not sharp-edged, do not cause injuries. It transmits heat 20% less than glass of the same thickness. The maximum bearing temperature is 80 °C, it is a flammable thermoplastic. It has a bright appearance in transparent and colorful forms.

Dimensions:

1000\*2000 - 1250\*2500 - 1350\*2000 and 1500\*3000mm.

Plexiglass is a very suitable product to be used in different areas such as illuminated and non-illuminated advertisement boards, Fair stands, Direction signs, Brochure Holder, Electric panels and Machine covers, Interior and Exterior decoration....

Casting Acrylic Sheets are suitable for cutting, drilling and milling, bending, bending and heat shaping.



## SILICONE SHEET

The specific gravity is 1.20 gr / cm<sup>3</sup>.

Transparent silicone sheet can be used in food, medicine, lighting, electricity, textile, computer, automotive and heat industries in places resistant to -60 °C + 250 °C. Silicone sheets do not allow bacteria and fungus growth. Transparent silicone sheets are very resistant to ultraviolet, corrosion, chemicals, vegetable oil, electric current and ozone. Transparent silicone sheets are a food grade material. Hardness in transparent silicone sheets 50-60 shore, rupture 5 + 1 Mpa, elongation 350% + 50.

Usage Areas

Thermal and Electricity Sector; Automotive industry; Food, Medicine and Construction Sector; Defense and Security Sector

## PLASTIC PRODUCTS



### PP / POLYPROPYLENE

Polypropylene is a low specific gravity plastic. It has good chemical and electrical properties. Its use below 0 degrees is not preferred because its mechanical properties are weakened. Normal working temperature is between + 0C, + 100C. It is an economical material due to its low density.

#### Usage areas

The most common uses are storage tanks. Polypropylene tanks are preferred for the storage of chemicals and wastewater facilities. It is gray in color.



### PVC

Being resistant to many chemicals, especially strong acids, has made it a preferred material in such applications. Due to its structural feature, PVC is among the weldable and glueable materials. It has a non-flammable feature. (It does not ignite when held on fire) Electrical arc resistance is good. Impact resistance is not good.

Operating Temperatures;  
Between + 60 ° C and -15 ° C

Usage areas;  
Chemical tanks  
Production of electrical equipment  
Water Treatment Plant pools  
Pump and valve bodies



### EPOXY

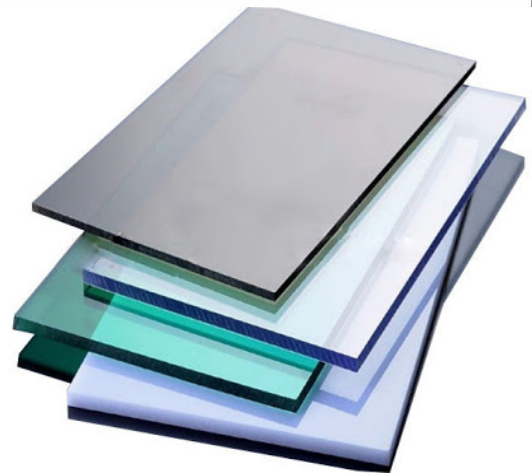
They are of high mechanical strength using EPOXY resin based glass fiber. It is very resistant to chemicals. Physical strength is very strong.

#### Properties;

Low density  
Excellent chemical and water separation resistance  
Friction resistance  
Electrical insulation  
It does not lose its flexibility and electrical properties up to 150 degrees.

#### Usage areas;

High frequency current containing environments, Coil carcasses, electrical terminal boards, insulators, safety gaskets, washers and washers, gears, shaft bearings, pulleys and pulleys, gaskets, vacuum pump parts, high heat and high load requiring high hardness wherever it is suitable for use in many areas due to its mechanical and high electrical stress resistance values, low water absorbency, 40 kV electrical value in machine parts, difficult mechanical and chip removal +155 C heat resistance, excellent electrical and heat insulation resistance.



### SOLID

Since solid polycarbonate sheets are lighter than glass, it is a highly preferred product instead of glass. Thanks to its unbreakable feature, it is preferred in places where safety is of primary importance. Available in thicknesses from 1mm to 15mm. Standard sizes of solid polycarbonate sheets are 205x305cm. Available in Transparent and Bronze color options. Thanks to its UV, it prevents harmful rays of the sun. It is not affected in external conditions.

Solid polycarbonate sheets can be used both as indoor and outdoor materials. Thanks to its non-flammable feature, it can be used comfortably in various sectors. It has thermoform feature.

Application areas of Solid Polycarbonate Sheets; Advertising industry, greenhouses, bulletproof glass manufacturing, bus stops, sound barrier systems, safety equipment, electronics industry, roof lighting, shopping malls, schools etc. It is used for stylish aesthetic applications.



## PLASTIC PRODUCTS



### POLYURETHANE

It has a wide range of usage in the industry. It shows high resistance to abrasion, tear, impact, deformation and various chemicals compared to rubber and other elastomer materials. Abrasion resistance is 5-40 times better than rubber. Tear and tear strengths are very good. Their life is reduced in concentrated sulfur and nitric acid. Being able to work in a wide range of work increases the efficiency and usage areas of the material. Ozone and weather resistance feature is excellent.

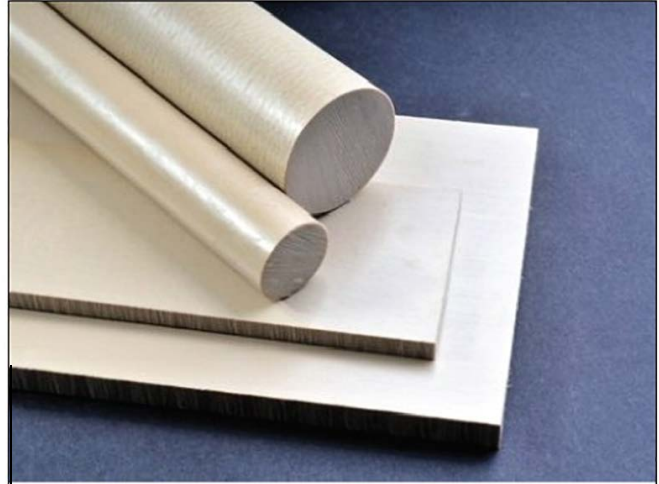
Since they have good electrical properties, they can be used as insulation materials. It is in the color of honey foam. There are also red and yellow colors. It is generally used as 90 shore.



### RUBBER SHEET

Rubber-based sheet is a flexible material that is vulcanized from natural rubber, synthetic rubber and special chemical mixtures, used in the construction of gaskets, which are interconnected and sealed between the surfaces of two compressed parts.

Cloth-free sheets can be produced in desired colors and sizes (width 1500 mm-length infinite).

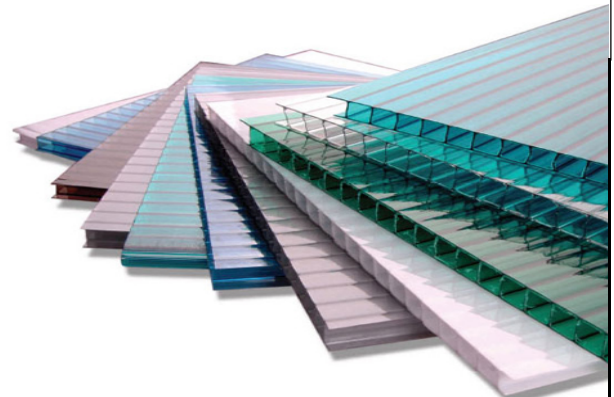


### PEEK

It is a material where all the strength properties expected from plastics in industrial sense are combined at the highest point. PEEK is a thermoplastic with great mechanical properties even at high temperatures (continuous 250 ° C, short-term 310 ° C). It is also resistant to high energy radiation. Due to the high performance of PEEK's physical properties, has made it a preferred item. It is manufactured as bars and sheets. Continuous use temperature is about 260 ° C.

Usage places

Automotive, electrical and electronic filtering, food processing machinery, liquid processing, paper industry, bearings and roller bearings, filler connections, heat exchanger pipes-heating elements, sterile chamber liquid filling, discharge systems, fittings, pumps, indicators, surgical hand tools, valve seats, pump gears, aerospace, semiconductor industry, medical parts, piston parts, compressor



### POLYCARBONATE

Polycarbonate Sheets are corrugated sheets with 210 cm x 600 cm standard dimensions, which can be produced in various lengths with fixed width.

Thickness: 4mm / 6mm / 8mm / 10mm / 16 mm. Color options are transparent, white, blue, red, gray, bronze, green.

Corrugated Polycarbonate Sheet is mostly used for roofing, as it is affordable and easy to apply. Apart from this, its usage areas are; such as advertising industry, greenhouse and winter gardens, construction industry, pool tops, bus stops, spring crossing areas, roof and factory lights, facade applications, gyms.

Application of Corrugated Polycarbonate Sheet:

Corrugated Polycarbonate sheet is attached to each other with aluminum profiles and attached to the carcass system below with the help of smart screws. It provides water sealing feature thanks to the E.P.D.M Wick.

General Features of Corrugated Polycarbonate Sheet:

Eliminates the problem of water isolation, has high impact resistance, It does not emit flame, It provides high thermal insulation, It provides the homogeneous distribution of light, It has the flexibility that can be formed by cold twisting, It is 6 times lighter than glass, It is resistant to 40 C and + 120 C climatic conditions.

Thicknesses: 4/6/8/10/16 MM

Dimensions : 2100X6000 MM

Colour options : Transparent, Bronze, Red, Blue, Green, White, Gray